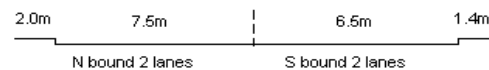
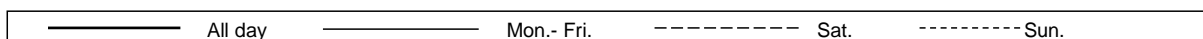
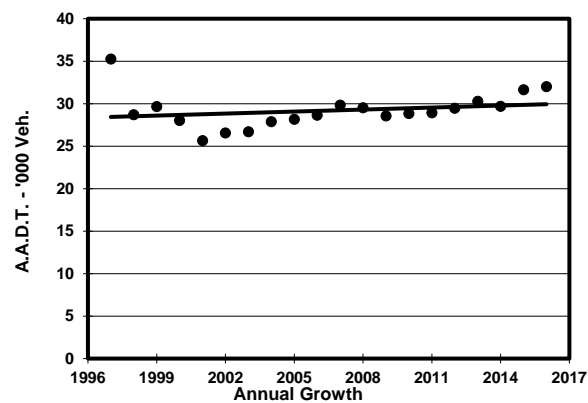
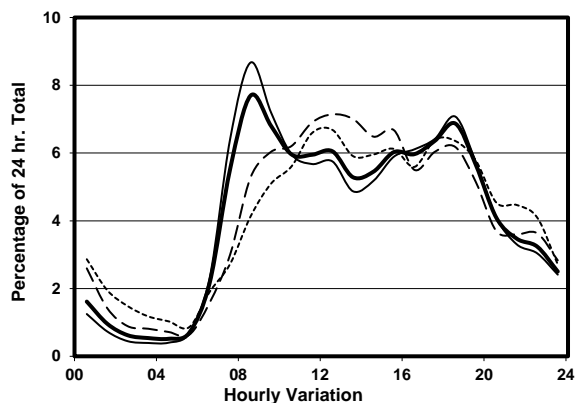
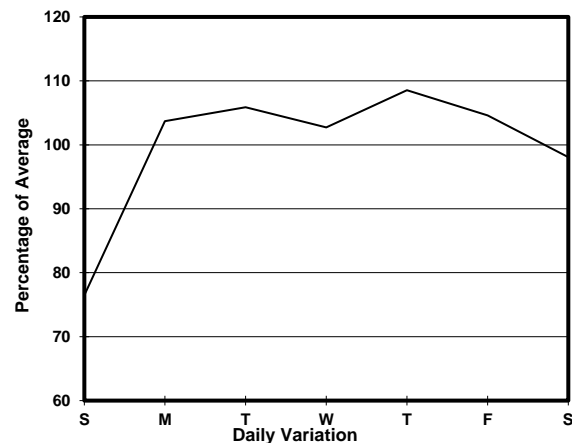
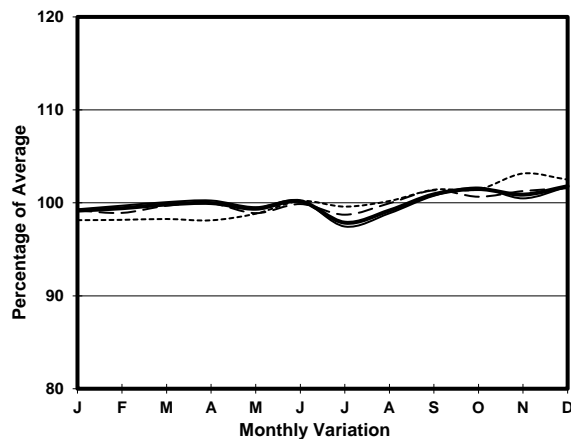


YEAR 2016
 COVERAGE (B) STATION 2201
 ROAD NETWORK MAJOR
 ROAD TYPE PRIMARY DISTRIBUTOR

LINK POK FU LAM RD (from POKFIELD RD to MOUNT DAVIS RD)



1. TRAFFIC FLOW VARIATION AND GROWTH



2. TRAFFIC CHARACTERISTICS (BY DIRECTION)

Parameter	All - Day	Mon. - Fri.	Sat.	Sun.
SOUTH BOUND				
A.A.D.T.	11450	12060	11110	9710
R 12 / 24 - %	71.5	72.6	71	65.2
R 16 / 24 - %	90.1	91.1	88.6	85.7
AM Peak Hour	0900-1000	0800-0900	0900-1000	0900-1000
One-way flow at AM peak hour	750	850	740	450
T - % (AM)	-	8.7	-	-
PM Peak Hour	1800-1900	1800-1900	1700-1800	1700-1800
One-way flow at PM peak hour	720	810	520	580
T - % (PM)	-	6.4	-	-
Prop.of commercial vehicles - 16 hr.	-	9.5	-	-
NORTH BOUND				
A.A.D.T.	20540	22000	20670	15040
R 12 / 24 - %	75.3	76.7	73.2	68.4
R 16 / 24 - %	90.6	91.5	88.5	86.2
AM Peak Hour	0800-0900	0800-0900	0900-1000	0900-1000
One-way flow at AM peak hour	1720	2100	1180	820
T - % (AM)	-	6.4	-	-
PM Peak Hour	1800-1900	1800-1900	1800-1900	1800-1900
One-way flow at PM peak hour	1480	1600	1450	1010
T - % (PM)	-	8.6	-	-
Prop.of commercial vehicles - 16 hr.	-	8	-	-

3. OTHER INFORMATION AND COMMENT

Coverage (B) Station 2201
Year 2016

4. Vehicle classification and occupancy - Monday to Friday

Time		Class of vehicle									
		Motor	Private	Taxi	Private	PLB	Goods veh.		Non	Fr. Bus	
		Cycle	Car		LB		Light	M & H	Fr. Bus	SD	DD
0700-0800	Pro	2.5	29.0	32.3	5.2	9.0	9.2	0.9	6.1	0.0	5.9
	Ocp	1.1	1.4	2.1	6.7	13.6	1.4	1.0	17.0	0.0	53.7
0800-0900	Pro	2.6	51.0	26.9	1.9	6.0	4.4	0.9	2.5	0.0	3.7
	Ocp	1.1	1.5	2.2	4.9	16.0	1.5	1.1	14.2	0.0	64.7
0900-1000	Pro	1.1	45.9	30.6	1.6	5.9	7.7	0.9	2.1	0.0	4.2
	Ocp	1.1	1.5	2.1	1.6	12.9	1.6	2.1	10.0	0.0	36.4
1000-1100	Pro	2.0	30.6	35.9	1.0	7.7	13.3	2.4	2.0	0.0	5.1
	Ocp	1.0	1.5	2.0	4.0	12.0	1.7	1.5	19.6	0.0	29.8
1100-1200	Pro	1.9	33.6	31.0	2.2	7.1	17.3	0.7	1.3	0.0	5.0
	Ocp	1.0	1.4	2.1	2.6	11.7	1.8	2.7	4.2	0.0	29.3
1200-1300	Pro	1.1	36.8	28.5	4.8	6.3	13.3	1.1	2.8	0.0	5.2
	Ocp	1.2	1.6	2.2	3.4	12.7	1.8	1.6	10.1	0.0	26.6
1300-1400	Pro	1.6	29.4	37.3	0.9	8.3	13.5	1.1	2.0	0.0	5.8
	Ocp	1.3	1.4	2.0	3.5	11.2	1.7	1.2	12.0	0.0	33.7
1400-1500	Pro	2.3	38.5	30.5	1.9	7.2	9.9	1.9	2.9	0.0	5.1
	Ocp	1.0	1.6	2.1	2.9	11.7	1.6	1.4	11.9	0.0	34.8
1500-1600	Pro	3.4	36.5	26.5	2.6	6.2	14.9	1.1	3.8	0.0	4.9
	Ocp	1.1	1.5	2.2	8.3	11.8	1.6	1.7	22.0	0.0	34.7
1600-1700	Pro	1.9	37.9	22.8	2.5	8.4	15.8	0.8	4.2	0.0	5.6
	Ocp	1.0	1.5	2.3	5.3	12.5	1.8	1.5	8.2	0.0	52.1
1700-1800	Pro	3.7	41.4	27.0	2.1	7.3	10.0	1.1	2.3	0.0	5.1
	Ocp	1.1	1.5	2.3	4.8	13.5	1.6	2.0	17.0	0.0	56.7
1800-1900	Pro	3.7	47.0	28.4	0.6	5.6	6.7	0.5	2.9	0.0	4.6
	Ocp	1.2	1.5	2.4	2.0	15.1	1.7	2.0	22.0	0.0	61.3
1900-2000	Pro	3.5	42.4	35.8	0.0	6.1	5.4	0.3	1.7	0.0	4.8
	Ocp	1.2	1.5	2.2	0.0	12.7	1.5	1.5	7.9	0.0	38.5
2000-2100	Pro	1.9	36.4	42.0	0.2	9.3	2.3	0.0	1.6	0.0	6.1
	Ocp	1.1	1.5	1.9	3.0	12.0	1.4	0.0	3.7	0.0	23.0
2100-2200	Pro	2.0	27.6	51.9	0.0	9.5	1.3	0.3	0.7	0.0	6.7
	Ocp	1.2	1.5	1.8	0.0	8.3	1.3	2.0	14.0	0.0	27.1
2200-2300	Pro	2.3	28.1	50.3	0.0	10.7	1.7	0.0	0.7	0.0	6.2
	Ocp	1.0	1.5	1.8	0.0	10.6	2.4	0.0	11.5	0.0	24.5
16 hours	Pro	2.4	38.6	32.2	1.8	7.2	9.2	0.9	2.5	0.0	5.1
	Ocp	1.1	1.5	2.1	4.6	12.5	1.7	1.6	14.1	0.0	40.3

Legend

Pro. Proportion of vehicles in % (Sum may not add up to 100% due to figure rounding)*

Ocp. Average occupancy of vehicles including both driver and passengers*

M&H Medium and Heavy

***** All traffic data are collected from combined bounds except for one way traffic